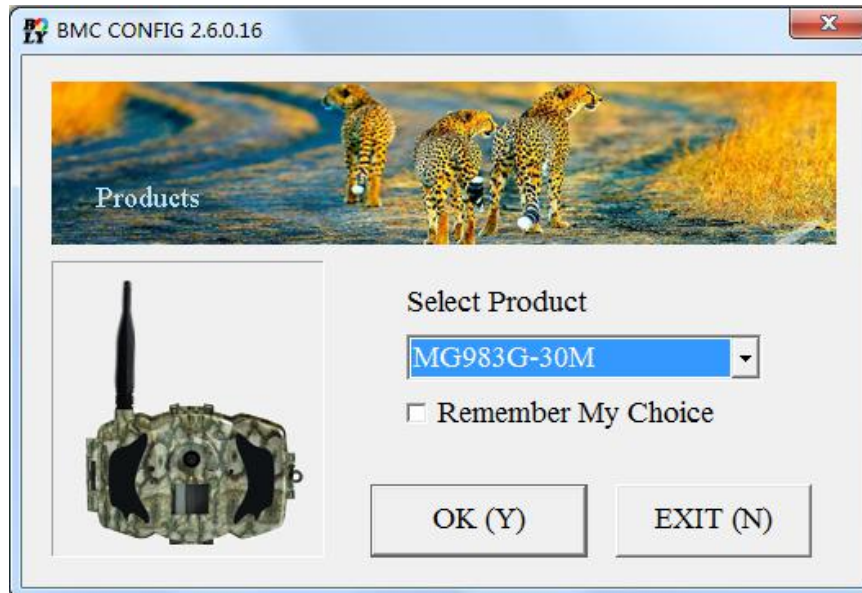


BMC CONFIG Usage Instructions

1)Open the software and select camera model.



2)Set the camera parameters

Before the start of setting,connect the camera with computer via a USB cable.

Step1 WAP/Internet setting:select your country and carriers according to your SIM card.

Step2 Check WAP/Internet Parameters:Fill out the required fields (marked with an asterisk).Input Email server such as “smtp.gmail.com”or “smtp.bolymedia.com.”

NOTE:If your email uses encryption techniques,select the corresponding protocol.Such as using Gmail as sending email, You should select SSL to ensure the success of sending mail.

BMC CONFIG : For MG983G-30M

Boly Media Communications Co., Ltd. (BMC)

Step 1 WAP / Internet Setting

Select Country: Australia, Austria, Canada, **China**, China HongKong

Select Operator: China-Mobile, China-Unicom, China-Unicom-3G, Others.....

Step 2 Check WAP / Internet Parameters (L)

Camera Setting

Click "Default Setting" button if you don't know how to modify camera parameters !

Default Setting (D)

Step 3 Change Setting (C)

Step 4 Customer Information Setting

Admin...Number : 150XXXX1234 Receive Email 1 : bolyguard@bolymedia.com ☒

Phone Number 2 : 150XXXX1234 Receive Email 2 : sales_sz@bolymedia.com

Phone Number 3 : Receive Email 3 : bolyguard@gmail.com

Phone Number 4 : Receive Email 4 :

Attention Please ,The Data Above Will Be Saved In The Following File:

E:\GSM\MG983G-30M.TXT

Step 5 SAVE (Y) EXIT (N)

WAP / Internet Parameters

Current WAP / Internet Parameters As Follows, You Can Modify Highlighted 4 Items If Necessary !

WAP Setting

MMS URL : http://mmsc.monternet.com *

MMS APN : cmwap PORT : 80 *

MMS IP : 10 . 0 . 0 . 172 *

ACCOUNT :

PASSWORD :

CLEAR PARAMETERS (C)

Internet Setting

SEND EMAIL ADDR : bolyguard@bolymedia.com *

SEND EMAIL PWD : ***** *

SEND EMAIL SERVER : smtp.bolymedia.com *

GPRS APN : cmnet PORT : 80 *

GPRS ACCOUNT :

GPRS PASSWORD :

OK (Y) Cancel (N) **Advanced... (V)**

Advanced Setup

SMTP Server

☐ Enable encryption (E)

☐ This service requires SSL (S)

☐ This service requires STARTTLS (T)

OK (Y) Cancel (N)

Step3 Camera setting:set parameters as you want,click “Changing Setting”.Also you can use default parameters with “default setting”(For the first time use which is recommended).

Step4 Custom Information Setting:input your receiving phone number in “administrator number” or “Phone Number”,e-mail address in “Receive Email ” .

Step5 Save the data in the camera’s SD card:Save the GSM folder to the root directory of SD card.

NOTE:If your country or SIM card operator is not in the list, try to find “Others”.then ask the SIM card operator for the parameters you need(MMS URL, MMS APN, Port, MMS IP, Account, Password, GPRS APN,GPRS account, GPRS password) and fill in. Also you need to fill in some parameters(send email server, port, email address and password) of an email account as sending email (gmail is recommended).Above all else, only SMTP is supported by the camera when sending email.

Down load the APP software from here:

<http://www.bolyguard.com/download.htm>